



1. 机壳分组件 Arm bed components

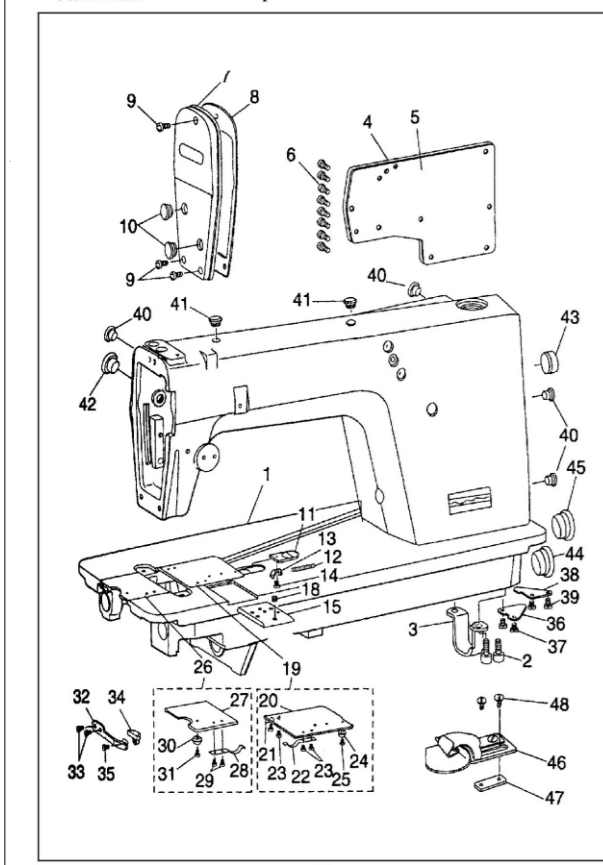


Table with 4 columns: 序号 Ref. No., 件号 Part No., 名称 Description, 数量 Arm. Req. Lists parts for the arm bed assembly.

2. 上轴杆分组件 Main shaft & needle bar components

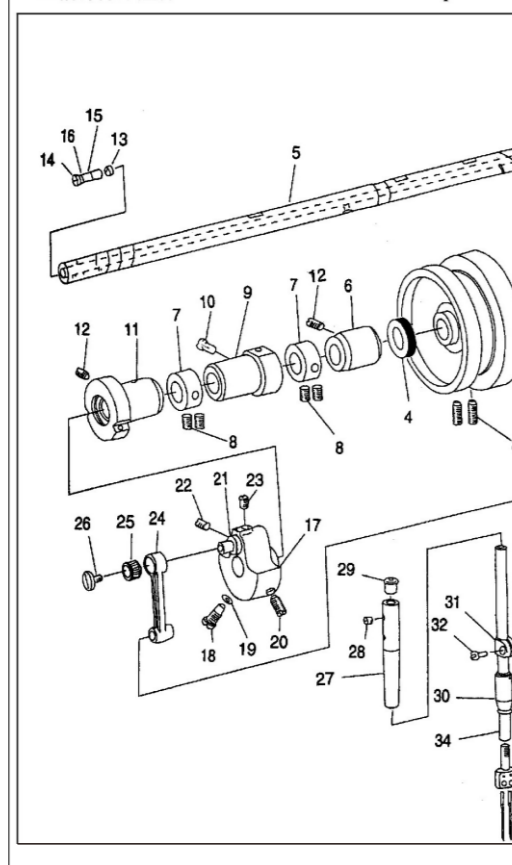


Table with 4 columns: 序号 Ref. No., 件号 Part No., 名称 Description, 数量 Arm. Req. Lists parts for the main shaft and needle bar assembly.

3. 压料分组件 Presser bar components

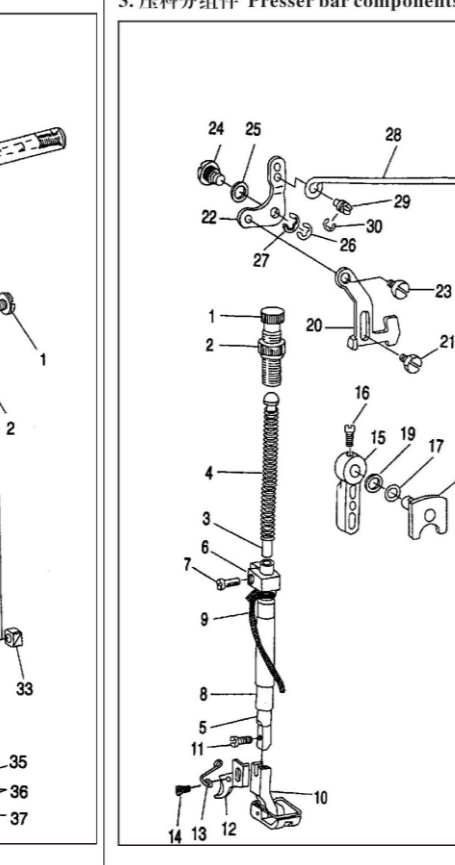


Table with 4 columns: 序号 Ref. No., 件号 Part No., 名称 Description, 数量 Arm. Req. Lists parts for the presser bar assembly.

4. 送料分组件 Feed mechanism components

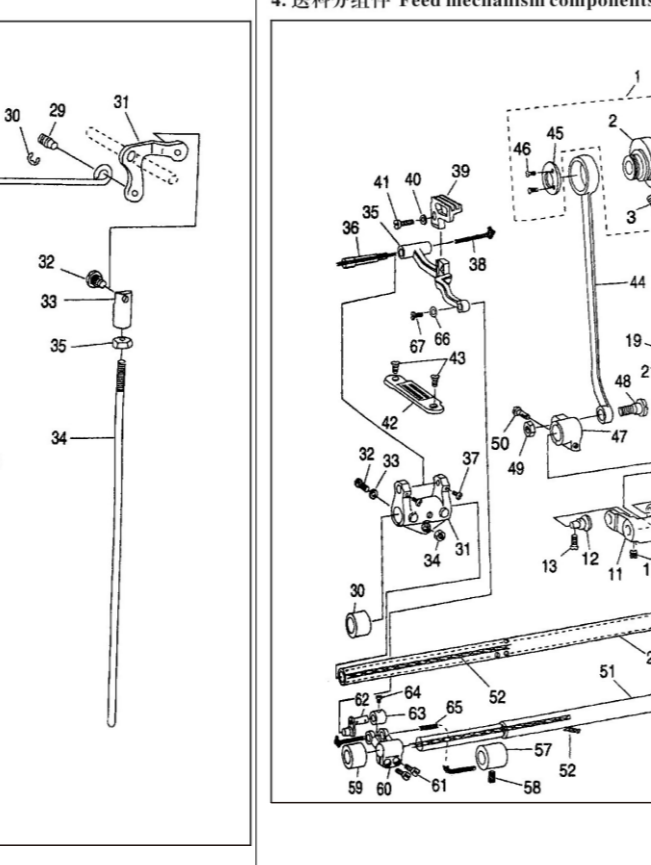


Table with 4 columns: 序号 Ref. No., 件号 Part No., 名称 Description, 数量 Arm. Req. Lists parts for the feed mechanism assembly.

5. 送料调节分组件 Feed regulating components

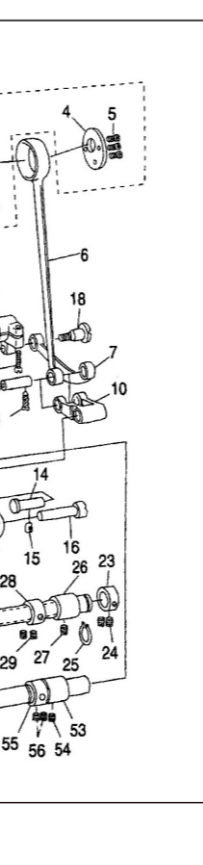


Table with 4 columns: 序号 Ref. No., 件号 Part No., 名称 Description, 数量 Arm. Req. Lists parts for the feed regulating assembly.

6. 弯针勾线分组件 Looper thread retainer components

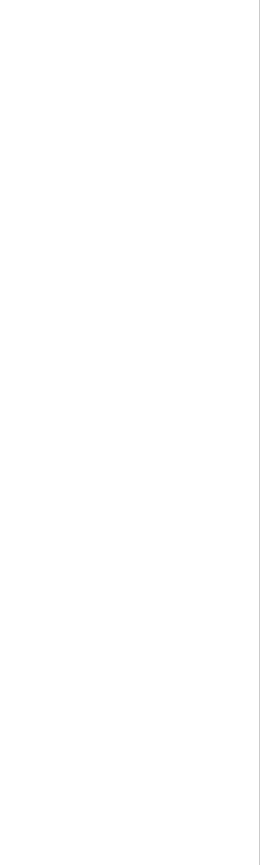


Table with 4 columns: 序号 Ref. No., 件号 Part No., 名称 Description, 数量 Arm. Req. Lists parts for the looper thread retainer assembly.

7. 挑线、松线、夹线分组件 Thread take-up, tension, and tension releasing assembly complete

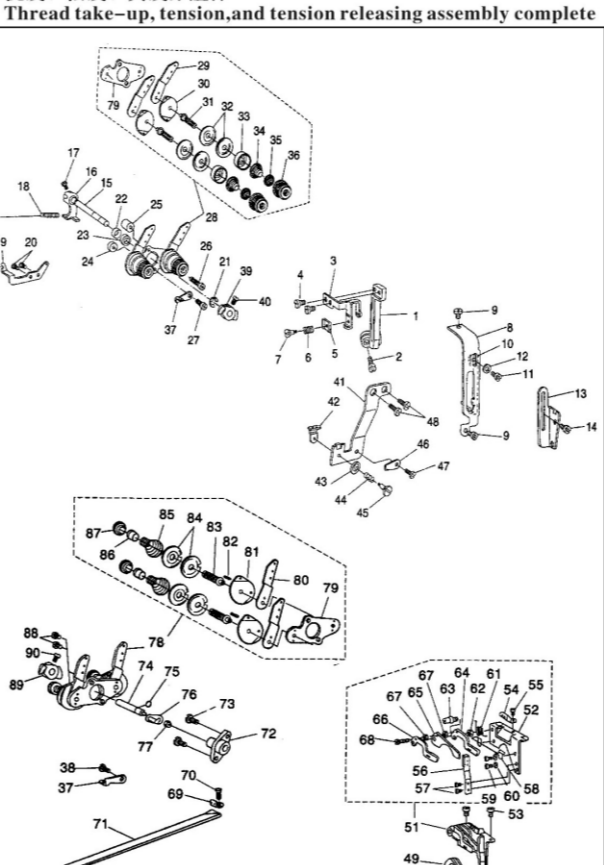


Table with 4 columns: 序号 Ref. No., 件号 Part No., 名称 Description, 数量 Arm. Req. Lists parts for the thread assembly.

8. 润滑分组件 Lubrication

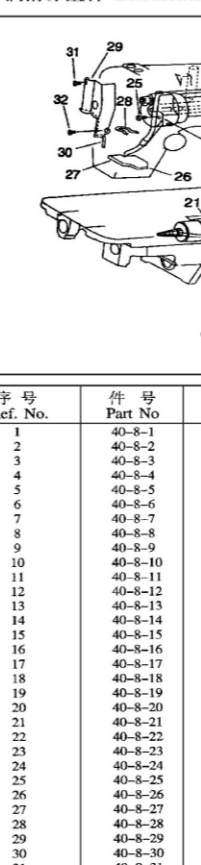


Table with 4 columns: 序号 Ref. No., 件号 Part No., 名称 Description, 数量 Arm. Req. Lists parts for the lubrication assembly.

9. 油盒、膝抬压脚分组件 Oil reservoir & knee lifter components

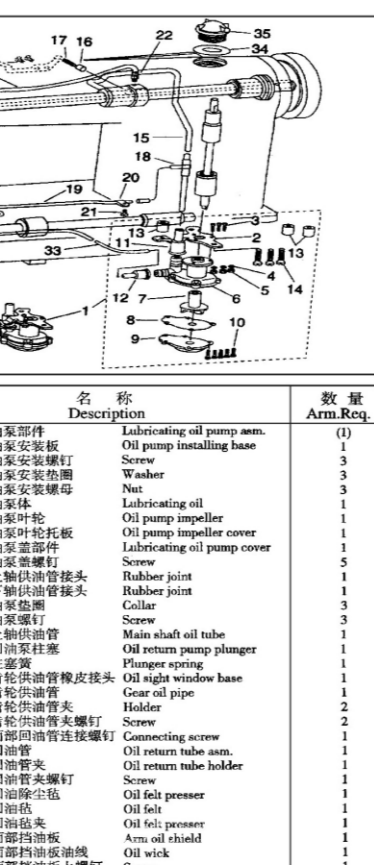


Table with 4 columns: 序号 Ref. No., 件号 Part No., 名称 Description, 数量 Arm. Req. Lists parts for the oil reservoir and knee lifter assembly.

10. 机头附件 Machine head accessories

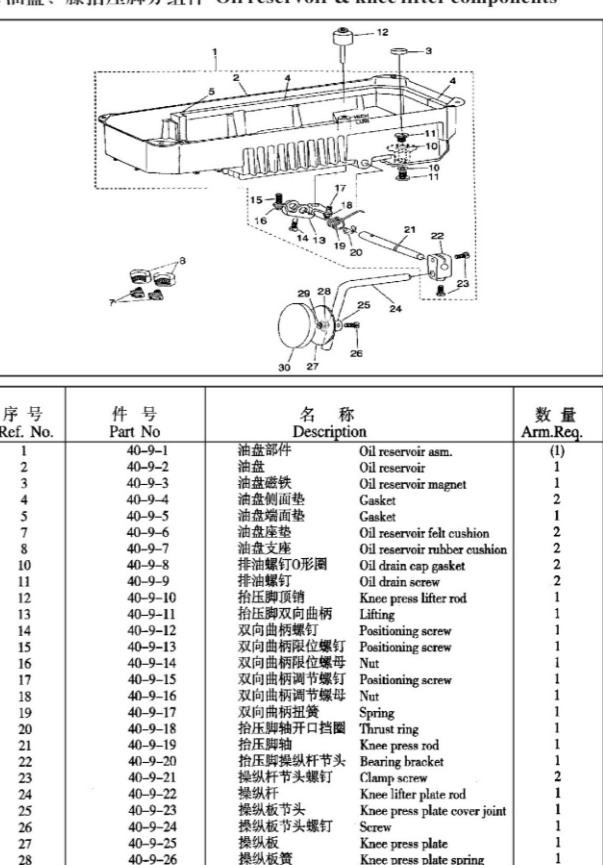


Table with 4 columns: 序号 Ref. No., 件号 Part No., 名称 Description, 数量 Arm. Req. Lists parts for machine head accessories.

11. 四线四架分组件 Quadruple-thread spool stand asm.

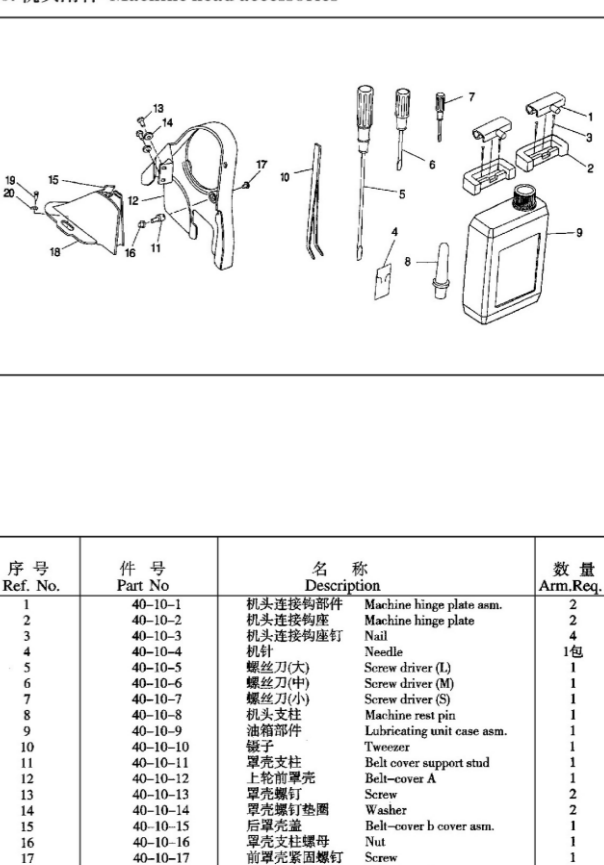


Table with 4 columns: 序号 Ref. No., 件号 Part No., 名称 Description, 数量 Arm. Req. Lists parts for the quadruple-thread spool stand assembly.

12. 单针缝线机与双针相对更应之零件 Model one-needle high speed chainstitcher

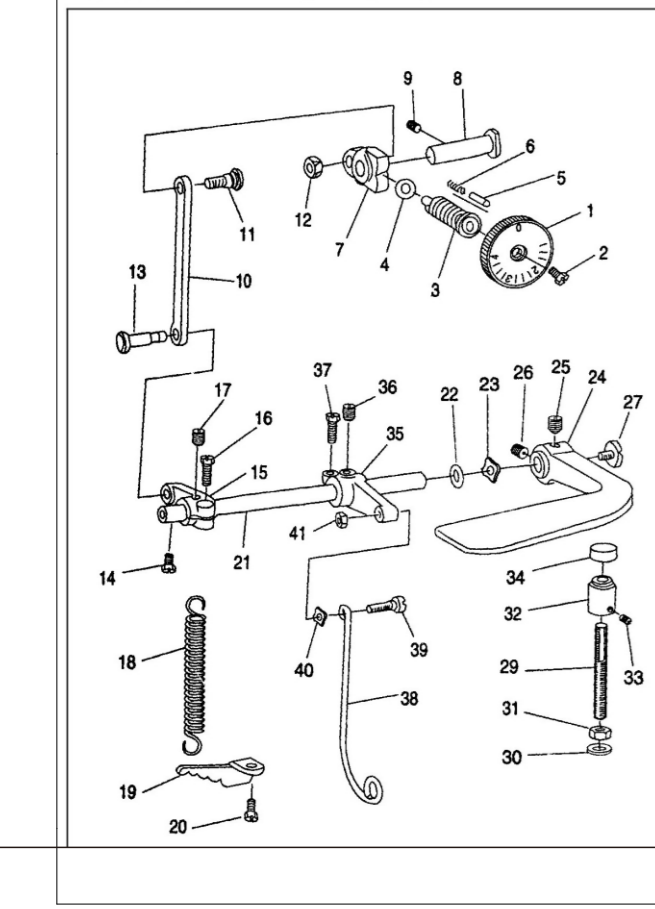


Table with 4 columns: 序号 Ref. No., 件号 Part No., 名称 Description, 数量 Arm. Req. Lists parts for the single needle high speed chainstitcher.

13. 16 直驱机型专用件 DIRECTLY DRIVING TYPE EXCLUSIVE PARTS



Table with 4 columns: 序号 Ref. No., 件号 Part No., 名称 Description, 数量 Arm. Req. Lists parts for the 16 directly driving type.

14. 双针双列与双针单列零件变化表 List of parts change

Table comparing parts for double-needle double-row and double-needle single-row models, listing part numbers and descriptions.

15. 双针双列、双针单列零件一览表 List throat of & its accessories

Table listing parts and accessories for double-needle double-row and double-needle single-row models, including part numbers and descriptions.

16. 双针双列、双针单列零件一览表 List throat of & its accessories

Table listing parts and accessories for double-needle double-row and double-needle single-row models, including part numbers and descriptions.

17. 双针双列、双针单列零件一览表 List throat of & its accessories

Table listing parts and accessories for double-needle double-row and double-needle single-row models, including part numbers and descriptions.

18. 双针双列、双针单列零件一览表 List throat of & its accessories

Table listing parts and accessories for double-needle double-row and double-needle single-row models, including part numbers and descriptions.

19. 双针双列、双针单列零件一览表 List throat of & its accessories

Table listing parts and accessories for double-needle double-row and double-needle single-row models, including part numbers and descriptions.

20. 双针双列、双针单列零件一览表 List throat of & its accessories

Table listing parts and accessories for double-needle double-row and double-needle single-row models, including part numbers and descriptions.